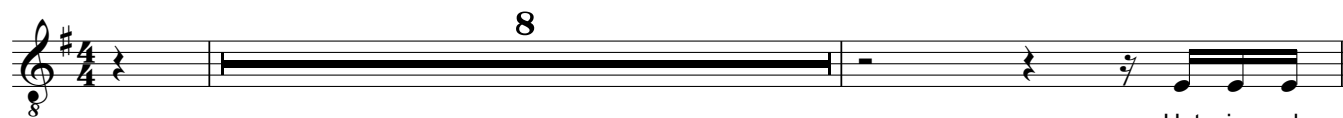


♩ = 56



Het is al

A1

laat, ik voel me moe maar wel vol-daan. Ik poets mijn



tan-den, doe de lich-ten uit en loop de trap op om naar bed te gaan. Maar een-maal



bo - ven kan ik de ver - lei - ding niet weer-staan om nog heel



e - ven naar je te kij - ken, en je ka - mer in te gaan. Je ligt te

A2

sla - pen in je bed - je met je schaa - p - je te - gen je aan. Ik zie je



hand - jes en je ge - zicht - je en ik blijf nog e - ven staan. Je bent zo



kwets - baar en toch zo dap - per, zo'n gro - te boef en toch zo klein. Ik ben zo



dank - baar en ge - luk - kig dat ik je va - der_ mag zijn. Ik ben je

B1

27

va - der, ik ben je va - der lie - ve schat. lk ben je

29

va - der, een va - der zo - als ik zelf nooit heb ge - had lk ben je

31

va - der, je va - der, soms kan ik het bij - na niet ge - lo - ven. lk ben je

33

va - der, en ik hou van jou je haalt het bes - te in mij bo - ven. lk ben je

B2

35

va - der, ik ben je va - der lie - ve schat. lk ben je

37

va - der, een va - der zo - als ik zelf nooit heb ge - had lk ben je

39

va - der, je va - der, soms kan ik het bij - na niet ge - lo - ven. lk ben je

41

va - der, je va - der, het haalt het bes - te in mij bo - ven.

43

3

Vader

Jan Schneider

♩ = 56

Intro 9 **A1** 8

A2 18 Em C F Am

cd is halve toon hoger

22 Em D A C#m B

27 **B1** 8 **B2** 11

Vader

Jan Schneider

♩ = 56

Intro

Em C Dm

TAB 7 7 8 7 7 9 8 9 7 7 9 7 9 5 5 5 5 7 5 7 5 7 6 5 5 7 6 7 5 5 7 5 7

4 Am Em D

TAB 5 5 5 5 7 5 5 7 5 7 5 6 7 5 7 8 15 12 10 8 9 7 9 7 5 7 7 7 9 7 9 7 9

7 A C#m B

TAB 5 6 7 7 6 7 5 4 6 6 4 6 7 8 8 9 7 9 8 9 8 9 7 9 7

10 A1 Em C Dm

TAB 0 8 7 7 7 9 8 9 7 7 9 7 9 3 5 5 5 7 5 7 7 5 7 5 6 5 5 7 6 7 5 5 7 5 7

13 Am Em D

TAB 5 5 5 5 7 5 5 7 5 7 5 6 7 5 7 8 15 12 10 8 9 7 9 7 5 7 7 7 9 7 9 7 9

16 A Bm

TAB 5 5 6 6 6 7 5 7 6 7 6 7 7 7 7 9 7 9 7 9 7 9

Elektrische Gitar

18 **A2** Em C F

TAB: 8 7 9 8 9 7 9 7 9 | 3 5 5 5 7 5 7 5 7 | 8 10 10 10 12 10 12 10 12

21 Am Em D

TAB: 5 5 5 5 7 5 7 5 7 5 7 | 8 15 12 10 8 9 7 9 7 | 5 7 7 9 7 9 7 9

24 A C#m B

TAB: 5 6 7 7 6 7 4 4 6 6 4 6 | 7 8 8 9 7 9 8 9 8 9 | 7 7 9 7

27 **B1** Zie A1

35 **B2** Em C F

TAB: 8 7 9 8 9 7 9 7 9 | 3 5 5 5 7 5 7 5 7 | 8 10 10 10 12 10 12 10 12

38 Am Em D

TAB: 5 5 5 5 7 5 7 5 7 5 7 | 8 15 12 10 8 9 7 9 7 | 5 7 7 9 7 9 7 9

41 A C#m B Em

TAB: 5 6 7 7 6 7 4 4 6 6 4 6 | 7 8 8 9 7 9 8 9 8 9 | 8 7 9 8 7 9 7 9 | 7 9 7

Bas

Vader

Om mee te spelen met de cd, capo I

Jan Schneider

♩ = 56

Intro

Intro musical notation for bass guitar. It consists of two staves. The top staff is in bass clef with a key signature of one sharp (F#) and a 4/4 time signature. It features a whole rest followed by a measure with a whole note chord. The bottom staff shows the fretting hand with a capo on the first fret, indicated by a 'C' above the staff. The first measure has a whole rest, and the second measure has a whole note chord with fingerings 0, 2, 0.

10 **A1** Em

Musical notation for system A1, measures 10-13. The top staff shows the melody with notes and rests. The bottom staff shows the fretting hand with fingerings. Chords are indicated above the staff: Em, C, Dm, Am.

14 Em

Musical notation for system 14-17, measures 14-17. The top staff shows the melody with notes and rests. The bottom staff shows the fretting hand with fingerings. Chords are indicated above the staff: Em, D, A, Bm.

18 **A2** Em

Musical notation for system A2, measures 18-21. The top staff shows the melody with notes and rests. The bottom staff shows the fretting hand with fingerings. Chords are indicated above the staff: Em, C, F, Am.

22 Em

Musical notation for system 22-25, measures 22-25. The top staff shows the melody with notes and rests. The bottom staff shows the fretting hand with fingerings. Chords are indicated above the staff: Em, D, A, C#m, B.

27 **B1** Em C Dm Am

0 0 0 0 3 0 0 0 2 | 3 3 3 3 3 3 3 2 | 0 0 0 0 0 0 0 0 | 0 0 0 0 0 0 0 3

31 Em D A Bm

0 0 0 0 2 0 0 0 | 0 0 0 0 0 0 0 0 | 0 0 0 0 0 0 0 4 | 2 2 2 2 2 2 2 2

35 **B2** Em C F Am

0 0 0 0 3 0 0 0 2 | 3 3 3 3 3 3 3 0 | 1 1 1 1 3 1 1 1 3 | 0 0 0 0 0 0 0 3

39 Em D A C#m B

0 0 0 0 2 0 0 0 | 0 0 0 0 0 0 0 0 | 0 0 0 0 0 4 4 4 4 | 2 2 2 2 |

Drums

Vader

Jan Schneider

♩ = 56

Intro

8

Musical notation for the Intro section, measures 1-8. The notation is on a single staff with a 4/4 time signature. It begins with a rest for 4 measures, followed by a series of eighth notes and quarter notes.

A1

10

Musical notation for section A1, measures 10-12. The notation is on a single staff with a 4/4 time signature. It features a complex rhythmic pattern with eighth notes and quarter notes, including some beamed eighth notes.

13

Musical notation for section A1, measures 13-15. The notation is on a single staff with a 4/4 time signature. It continues the complex rhythmic pattern from the previous section.

16

Musical notation for section A1, measures 16-18. The notation is on a single staff with a 4/4 time signature. It continues the complex rhythmic pattern from the previous section.

A2

18

Musical notation for section A2, measures 18-20. The notation is on a single staff with a 4/4 time signature. It features a complex rhythmic pattern with eighth notes and quarter notes, including some beamed eighth notes.

21

Musical notation for section A2, measures 21-23. The notation is on a single staff with a 4/4 time signature. It continues the complex rhythmic pattern from the previous section.

24

Musical notation for section A2, measures 24-26. The notation is on a single staff with a 4/4 time signature. It continues the complex rhythmic pattern from the previous section.

B1

27

Musical notation for measure 27, featuring a drum staff with a snare drum and a bass drum. The snare drum part consists of a series of eighth notes with 'x' marks above them, indicating a specific drum sound. The bass drum part consists of a series of eighth notes with stems pointing down.

30

Musical notation for measure 30, continuing the drum pattern from measure 27. The snare drum part consists of a series of eighth notes with 'x' marks above them. The bass drum part consists of a series of eighth notes with stems pointing down.

33

Musical notation for measure 33, continuing the drum pattern. The snare drum part consists of a series of eighth notes with 'x' marks above them. The bass drum part consists of a series of eighth notes with stems pointing down.

B2

35

Musical notation for measure 35, featuring a drum staff with a snare drum and a bass drum. The snare drum part consists of a series of eighth notes with 'x' marks above them. The bass drum part consists of a series of eighth notes with stems pointing down.

38

Musical notation for measure 38, continuing the drum pattern. The snare drum part consists of a series of eighth notes with 'x' marks above them. The bass drum part consists of a series of eighth notes with stems pointing down.

41

Musical notation for measure 41, continuing the drum pattern. The snare drum part consists of a series of eighth notes with 'x' marks above them. The bass drum part consists of a series of eighth notes with stems pointing down. The measure ends with a double bar line and a '3' above it, indicating a triplet.